
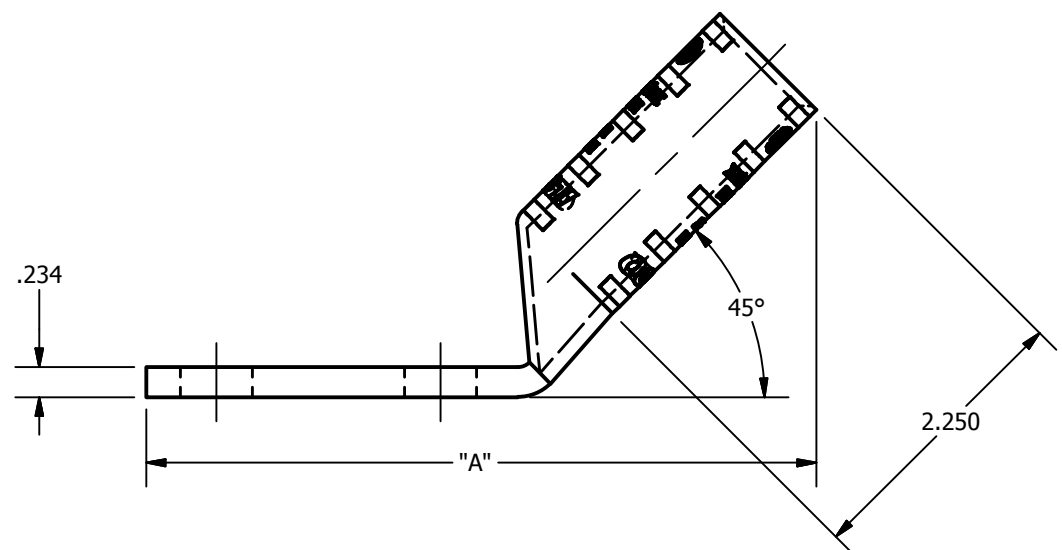
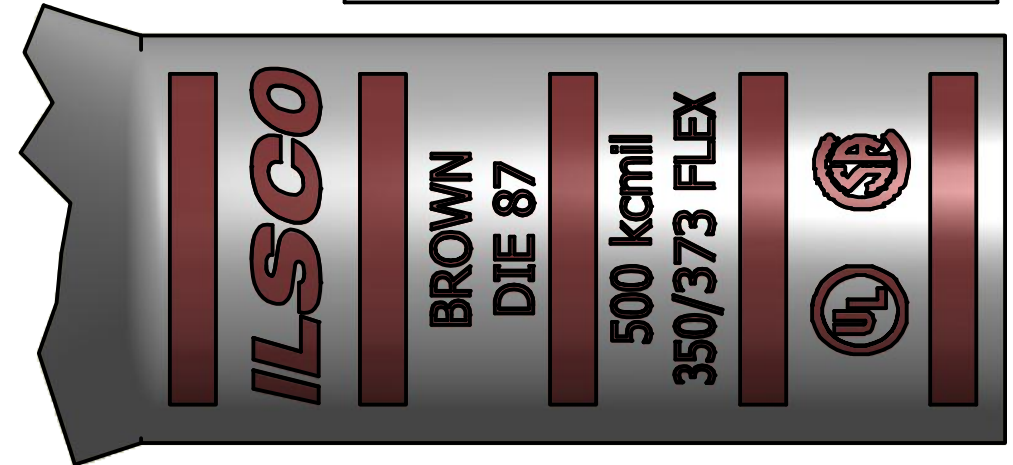
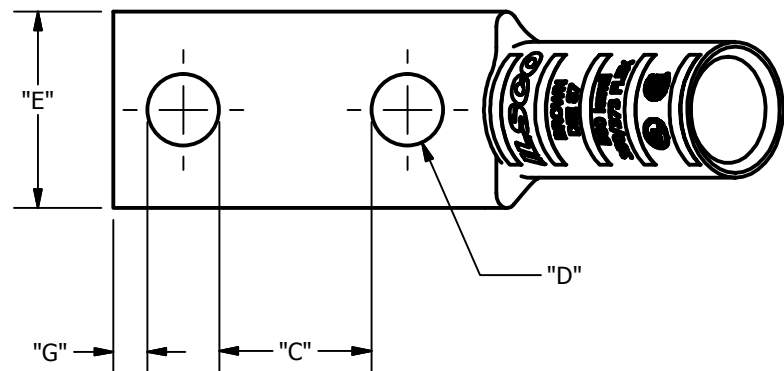
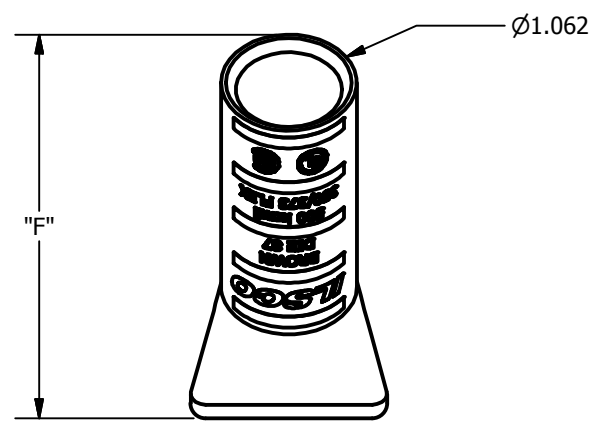


SCREW: NONE	MATERIAL: COPPER	REV: G	 800-776-9775 www.ilSCO.com
CAT. NO.: SEE CHART	PLATING: EL-TIN	DRAWN BY:DW SCALE: NTS	
INFORMATION SHEET:FORM 157	MARKING: SEE CHART	DATE:6/3/2008 SIZE: B	
			DWG NO: Y1503-D-4
			SHEET: 1 OF 1



DETAIL C
INK MARK TOP & BOTTOM



CATALOG NUMBER	"A"	"C"	"D"	"E"	"F"	"G"	TANG MARKING
CLNB-500-14-12-4	3.596	0.219	0.281	1.535	3.000	0.180	
CLNB-500-14-58-4	3.783	0.344	0.281	1.535	3.000	0.180	
CLNB-500-14-34-4	3.783	0.469	0.281	1.535	3.000	0.180	
CLNB-500-14-1-4	4.033	0.719	0.281	1.535	3.000	0.180	
CLNB-500-516-58-4	3.783	0.282	0.343	1.535	3.000	0.180	
CLNB-500-516-34-4	4.033	0.407	0.343	1.535	3.000	0.180	
CLNB-500-516-78-4	4.033	0.532	0.343	1.535	3.000	0.180	
CLNB-500-516-1-4	4.283	0.657	0.343	1.535	3.000	0.180	
CLNB-500-516-134-4	4.846	1.407	0.343	1.535	3.000	0.180	
CLNB-500-38-34-4	4.033	0.344	0.406	1.535	3.000	0.211	
CLNB-500-38-78-4	4.283	0.469	0.406	1.535	3.000	0.211	
CLNB-500-38-1-4	4.283	0.594	0.406	1.535	3.000	0.211	
CLNB-500-38-116-4	4.283	0.656	0.406	1.535	3.000	0.211	
CLNB-500-38-118-4	4.471	0.719	0.406	1.535	3.000	0.211	
CLNB-500-38-134-4	4.971	1.344	0.406	1.535	3.000	0.211	
CLNB-500-38-2-4	5.346	1.594	0.406	1.535	3.000	0.211	
CLNB-500-12-1-4	4.471	0.438	0.562	1.535	3.000	0.265	
CLNB-500-12-114-4	4.846	0.688	0.562	1.535	3.000	0.265	
CLNB-500-12-112-4	4.971	0.938	0.562	1.535	3.000	0.265	
CLNB-500-12-134-4	5.346	1.188	0.562	1.535	3.000	0.265	ILSCO, CLNB-500-12-134-4, 1/2 X 1-3/4, 500 kcmil, 350/373 FLEX, DIE 87, UL, CSA
CLNB-500-12-178-4	5.346	1.313	0.562	1.535	3.000	0.265	